

PasMac

REMOVABLE SHAFT SOLUTION

PATENT PENDING

DECREASE DOWNTIME.

PROTECT YOUR EQUIPMENT.

IT'S THAT SIMPLE.



REMOVAL OF ANY SHAFT MOUNT GEARBOX CAN BE NEARLY IMPOSSIBLE AND OFTEN THE GEARBOX OR DRIVEN OBJECT CAN BE DAMAGED IN THE PROCESS.

The PasMac stainless steel removable shaft solution is the answer to trouble-free shaft-mounted speed reduction. The PasMac solution is a simple, yet effective, system to ease removal, decrease downtime and protect your equipment and people. PasMac comes in different configurations to meet your unique needs.

Make PasMac your competitive advantage.

Why PasMac?

PROTECT YOUR INVESTMENT

Humidity or caustic chemicals used for wash downs cause the shaft to corrode onto the driven object. Even in an ideal environment, separation can be nearly impossible. With PasMac, maintenance on gearboxes, bearings and driven objects is now streamlined and safe, greatly reducing equipment damage or personnel injury.



✂ How it works

PasMac is installed between the gearbox and driven object. It is coupled with the driven object's shaft using a split taper-lock bushing. The PasMac solution reduces equipment damage and provides for easy removal, even in the worst environments.



STANDARDIZATION

PasMac greatly streamlines maintenance and cuts down on spare parts inventory through shaft-diameter standardization. PasMac can mate a driver to any size shaft. Over time, or if installed as part of a plant's original design, this standardizes speed reduction and driven objects throughout a plant.

LIMITLESS APPLICATIONS

Don't let the shaft length on your existing equipment limit your choice of speed reduction. PasMac gives you the shaft length and diameter you need for all applications.



Meet the Products...



SERIES-1

- Stainless steel
- Provides easy access to bushing with the removal of the flange
- Makes heavy, cumbersome gear reducers easy to install & maintain



SERIES-2 (KEYLESS)

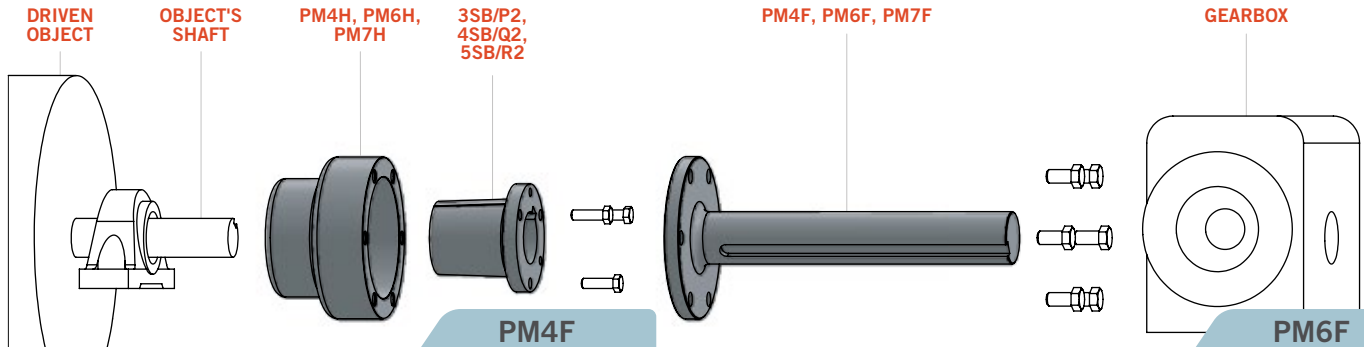
- Stainless steel
- Clean and compact
- No key required



SERIES-2

- Stainless steel
- Simple 3-bolt design
- Fits to any size shaft
- Easy to install

✓ The PasMac removable shaft is a simple, effective solution to the problems common to shaft-mounted gearboxes. Gearbox too wide? No problem. How much is downtime costing you by not using PasMac?



SHAFT DIAMETER	PASMAC PM4F	REQUIRED HUB	3SB/P2 BUSHING BORE RANGE
1"	PM4F100SX0800KN	PM4H	3/4" – 1-3/4"
1-1/16"	PM4F101SX0800KN	PM4H	3/4" – 1-3/4"
1-1/8"	PM4F102SX0800KN	PM4H	3/4" – 1-3/4"
1-3/16"	PM4F103SX0800KN	PM4H	3/4" – 1-3/4"
1-1/4"	PM4F104SX0800KN	PM4H	3/4" – 1-3/4"
1-5/16"	PM4F105SX0800KN	PM4H	3/4" – 1-3/4"
1-3/8"	PM4F106SX0800KN	PM4H	3/4" – 1-3/4"
1-7/16"	PM4F107SX0800KN	PM4H	3/4" – 1-3/4"
1-1/2"	PM4F108SX0800KN	PM4H	3/4" – 1-3/4"
1-9/16"	PM4F109SX0800KN	PM4H	3/4" – 1-3/4"
1-5/8"	PM4F110SX0800KN	PM4H	3/4" – 1-3/4"
1-11/16"	PM4F111SX0800KN	PM4H	3/4" – 1-3/4"
1-3/4"	PM4F112SX0800KN	PM4H	3/4" – 1-3/4"

SHAFT DIAMETER	PASMAC PM6F	REQUIRED HUB	4SB/Q2 BUSHING BORE RANGE
1-7/16"	PM6F107SX1200KN	PM6H	1-7/16" – 2-1/2"
1-1/2"	PM6F108SX1200KN	PM6H	1-7/16" – 2-1/2"
1-9/16"	PM6F109SX1200KN	PM6H	1-7/16" – 2-1/2"
1-5/8"	PM6F110SX1200KN	PM6H	1-7/16" – 2-1/2"
1-11/16"	PM6F111SX1200KN	PM6H	1-7/16" – 2-1/2"
1-3/4"	PM6F112SX1200KN	PM6H	1-7/16" – 2-1/2"
1-13/16"	PM6F113SX1200KN	PM6H	1-7/16" – 2-1/2"
1-7/8"	PM6F114SX1200KN	PM6H	1-7/16" – 2-1/2"
1-15/16"	PM6F115SX1200KN	PM6H	1-7/16" – 2-1/2"
2"	PM6F200SX1200KN	PM6H	1-7/16" – 2-1/2"
2-1/16"	PM6F201SX1200KN	PM6H	1-7/16" – 2-1/2"
2-1/8"	PM6F202SX1200KN	PM6H	1-7/16" – 2-1/2"
2-3/16"	PM6F203SX1200KN	PM6H	1-7/16" – 2-1/2"
2-1/4"	PM6F204SX1200KN	PM6H	1-7/16" – 2-1/2"
2-5/16"	PM6F205SX1200KN	PM6H	1-7/16" – 2-1/2"
2-3/8"	PM6F206SX1200KN	PM6H	1-7/16" – 2-1/2"
2-7/16"	PM6F207SX1200KN	PM6H	1-7/16" – 2-1/2"
2-1/2"	PM6F208SX1200KN	PM6H	1-7/16" – 2-1/2"

SHAFT DIAMETER SIZE REFERENCE

STANDARD		METRIC	
SHAFT DIA.	PART#	SHAFT DIA.	PART#
3/4"	012	20MM	020
1"	100	25MM	025
1-1/8"	102	30MM	030
1-3/16"	103	35MM	035
1-1/4"	104	40MM	040
1-5/16"	105	45MM	045
1-3/8"	106	50MM	050
1-7/16"	107		
1-1/2"	108		
1-5/8"	110		
1-11/16"	111		
1-3/4"	112		
1-7/8"	114		
1-15/16"	115		
2"	200		

KEYED OPTION

All PasMac products are available in **KEYED** and **NOT KEYED**.

SHAFT LENGTH

All PasMac products are available in **8"** AND **12"** shaft lengths.

! For BUSHING sizes, specs, and more information, see page 7.

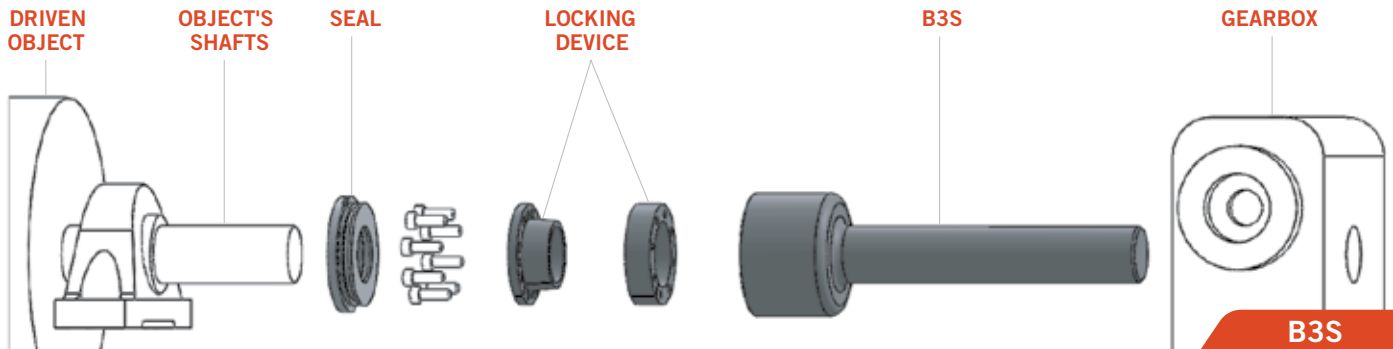


▶ See part number explanation at bottom of page

SHAFT DIAMETER	PASMAC PM7F	REQUIRED HUB	5SB/R2 BUSHING BORE RANGE
2-9/16"	PM7F209SX1400KN	PM7H	2-7/16" – 3-5/8"
2-5/8"	PM7F210SX1400KN	PM7H	2-7/16" – 3-5/8"
2-11/16"	PM7F211SX1400KN	PM7H	2-7/16" – 3-5/8"
2-3/4"	PM7F212SX1400KN	PM7H	2-7/16" – 3-5/8"
2-13/16"	PM7F213SX1400KN	PM7H	2-7/16" – 3-5/8"
2-7/8"	PM7F214SX1400KN	PM7H	2-7/16" – 3-5/8"
2-15/16"	PM7F215SX1400KN	PM7H	2-7/16" – 3-5/8"
3"	PM7F300SX1400KN	PM7H	2-7/16" – 3-5/8"
3-1/16"	PM7F301SX1400KN	PM7H	2-7/16" – 3-5/8"
3-1/8"	PM7F302SX1400KN	PM7H	2-7/16" – 3-5/8"
3-3/16"	PM7F303SX1400KN	PM7H	2-7/16" – 3-5/8"
3-1/4"	PM7F304SX1400KN	PM7H	2-7/16" – 3-5/8"
3-5/16"	PM7F305SX1400KN	PM7H	2-7/16" – 3-5/8"
3-3/8"	PM7F306SX1400KN	PM7H	2-7/16" – 3-5/8"
3-7/16"	PM7F307SX1400KN	PM7H	2-7/16" – 3-5/8"
3-1/2"	PM7F308SX1400KN	PM7H	2-7/16" – 3-5/8"
3-9/16"	PM7F309SX1400KN	PM7H	2-7/16" – 3-5/8"
3-5/8"	PM7F310SX1400KN	PM7H	2-7/16" – 3-5/8"

SERIES-1 | PART NUMBER EXPLANATION

EXAMPLE	SIZE	SHAFT DIAMETER (Ex. 1-15/16")	S = STANDARD • M = METRIC	BY	SHAFT LENGTH (Ex. 12.00")	K = KEYED • N = NO KEY	T = THREADED • N = NO THREAD
	PM6F	115	S	X	1200	K	N



PASMAC PART#	B-LOC GROUP#	B-LOC GROUPS	SHAFT LENGTH	SHAFT# (STANDARD)	SHAFT# (METRIC)	SHAFT DIAMETER RANGE
B3S05X0800KN	05	15mm	8"	012	015	3/4" (15mm)
B3S06X0800KN	06	3/4", 7/8", 18mm, 19mm, 20mm, 22mm	8"	012-102	020	3/4" - 1-1/8" (15mm - 28mm)
B3S07X0800KN	07	1", 24mm, 25mm	8"	012-104	025	3/4" - 1-1/4" (15mm - 32mm)
B3S08X0800KN	08	1-1/8", 1-3/16", 28mm, 30mm	8"	100-107	030	1" - 1-7/16" (25mm - 36mm)
B3S09X0800KN	09	1-1/4", 1-3/8", 32mm, 35mm	8"	100-110	035	1" - 1-5/8" (25mm - 40mm)
B3S10X0800KN	10	1-7/16", 1-1/2", 38mm, 40mm	8"	103-112	040	1-3/16" - 1-3/4" (30mm - 45mm)
B3S11X0800KN	11	1-5/8", 1-11/16", 1-3/4", 42mm, 45mm	8"	106-200	045	1-3/8" - 2" (35mm - 50mm)
B3S12X0800KN	12	1-7/8", 1-15/16", 2", 50mm	8"	112-200	050	1-5/8" - 2" (40mm - 50mm)

B3S05X1200KN	05	15mm	12"	012	015	3/4" (15mm)
B3S06X1200KN	06	3/4", 7/8", 18mm, 19mm, 20mm, 22mm	12"	012-102	020	3/4" - 1-1/8" (15mm - 28mm)
B3S07X1200KN	07	1", 24mm, 25mm	12"	012-104	025	3/4" - 1-1/4" (15mm - 32mm)
B3S08X1200KN	08	1-1/8", 1-3/16", 28mm, 30mm	12"	100-107	030	1" - 1-7/16" (25mm - 36mm)
B3S09X1200KN	09	1-1/4", 1-3/8", 32mm, 35mm	12"	100-110	035	1" - 1-5/8" (25mm - 40mm)
B3S10X1200KN	10	1-7/16", 1-1/2", 38mm, 40mm	12"	103-112	040	1-3/16" - 1-3/4" (30mm - 45mm)
B3S11X1200KN	11	1-5/8", 1-11/16", 1-3/4", 42mm, 45mm	12"	106-200	045	1-3/8" - 2" (35mm - 50mm)
B3S12X1200KN	12	1-7/8", 1-15/16", 2", 50mm	12"	112-200	050	1-5/8" - 2" (40mm - 50mm)

See part number explanation at bottom of page ▶

SHAFT DIAMETER SIZE REFERENCE

STANDARD		METRIC	
SHAFT DIA.	PART#	SHAFT DIA.	PART#
3/4"	012	20MM	020
1"	100	25MM	025
1-1/8"	102	30MM	030
1-3/16"	103	35MM	035
1-1/4"	104	40MM	040
1-5/16"	105	45MM	045
1-3/8"	106	50MM	050
1-7/16"	107		
1-1/2"	108		
1-5/8"	110		
1-11/16"	111		
1-3/4"	112		
1-7/8"	114		
1-15/16"	115		
2"	200		

KEYED OPTION
All PasMac products are available in KEYED and NOT KEYED .

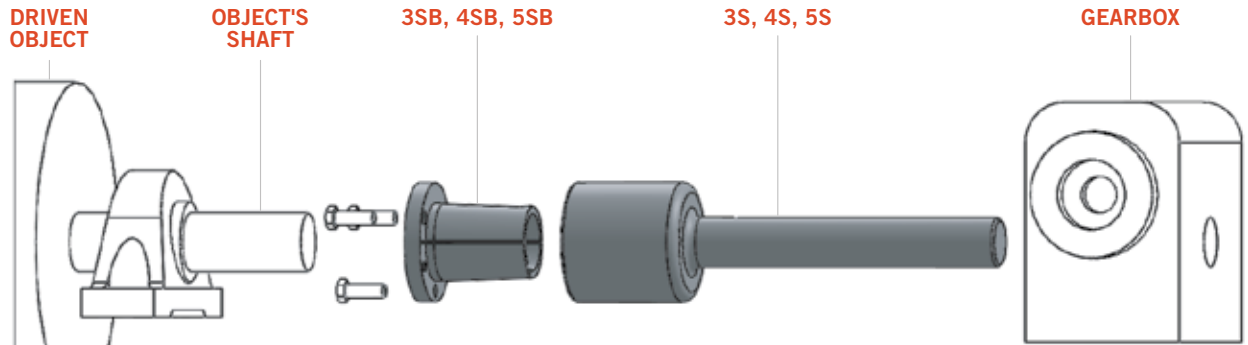
SHAFT LENGTH
All PasMac products are available in 8" AND 12" shaft lengths.



SERIES-2: Keyless | PART NUMBER EXPLANATION

Complete the part number using these fields

EXAMPLE	SIZE	B-LOC GROUP (Ex. 1-3/16")	BY	SHAFT LENGTH (Ex. 8.00")	K = KEYED N = NO KEY	T = THREADED N = NO THREAD	SHAFT# (Ex. 1-1/4")	S = STANDARD M = METRIC
	B3S	08	X	0800	N	N	104	S



SHAFT DIAMETER	PASMAC 3S	PASMAC 4S	PASMAC 5S
1"	3S100SX0800KN	-	-
1-1/8"	3S102SX0800KN	-	-
1-3/16"	3S103SX0800KN	-	-
1-1/4"	3S104SX0800KN	-	-
1-5/16"	3S105SX0800KN	-	-
1-3/8"	3S106SX0800KN	-	-
1-7/16"	3S107SX0800KN	-	-
1-1/2"	3S108SX0800KN	-	-
1-5/8"	3S110SX0800KN	-	-
1-11/16"	3S111SX0800KN	-	-
1-3/4"	3S112SX0800KN	-	-
1-7/8"	-	4S114SX1200KN	-
1-15/16"	-	4S115SX1200KN	-
2"	-	4S200SX1200KN	-
2-1/16"	-	4S201SX1200KN	-
2-1/8"	-	4S202SX1200KN	-
2-3/16"	-	4S203SX1200KN	-
2-1/4"	-	4S204SX1200KN	-
2-5/16"	-	4S205SX1200KN	-
2-3/8"	-	4S206SX1200KN	-
2-7/16"	-	4S207SX1200KN	-
2-1/2"	-	4S208SX1200KN	-
2-9/16"	-	-	5S209SX1400KN
2-5/8"	-	-	5S210SX1400KN
2-11/16"	-	-	5S211SX1400KN
2-3/4"	-	-	5S212SX1400KN
2-13/16"	-	-	5S213SX1400KN
2-7/8"	-	-	5S214SX1400KN
2-15/16"	-	-	5S215SX1400KN
3"	-	-	5S300SX1400KN
3-1/16"	-	-	5S301SX1400KN
3-1/8"	-	-	5S302SX1400KN
3-3/16"	-	-	5S303SX1400KN
3-1/4"	-	-	5S304SX1400KN
3-5/16"	-	-	5S305SX1400KN
3-3/8"	-	-	5S306SX1400KN
3-7/16"	-	-	5S307SX1400KN
3-1/2"	-	-	5S308SX1400KN
3-9/16"	-	-	5S309SX1400KN
3-5/8"	-	-	5S310SX1400KN

See part number explanation at bottom of page ▶

SHAFT DIAMETER SIZE REFERENCE

STANDARD		METRIC	
SHAFT DIA.	PART#	SHAFT DIA.	PART#
3/4"	012	20MM	020
1"	100	25MM	025
1-1/8"	102	30MM	030
1-3/16"	103	35MM	035
1-1/4"	104	40MM	040
1-5/16"	105	45MM	045
1-3/8"	106	50MM	050
1-7/16"	107		
1-1/2"	108		
1-5/8"	110		
1-11/16"	111		
1-3/4"	112		
1-7/8"	114		
1-15/16"	115		
2"	200		

KEYED OPTION

All PasMac products are available in **KEYED** and **NOT KEYED**.

SHAFT LENGTH

All PasMac products are available in **8" AND 12"** shaft lengths.

! For **BUSHING** sizes, specs, and more information, see page 7.



SERIES-2 | PART NUMBER EXPLANATION

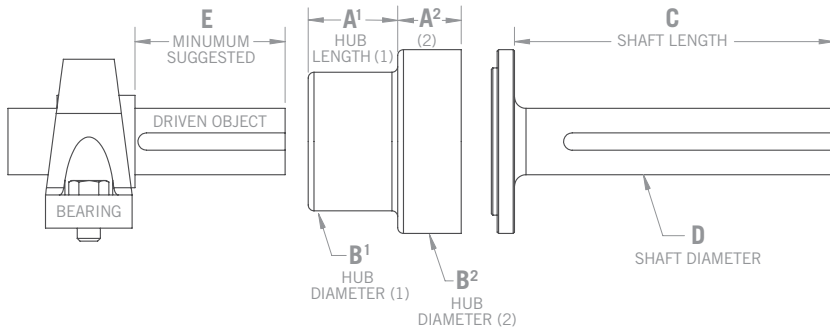
EXAMPLE	SIZE	SHAFT DIAMETER (Ex. 1-7/16")	S = STANDARD • M = METRIC	BY	SHAFT LENGTH (Ex. 14.00")	K = KEYED • N = NO KEY	T = THREADED • N = NO THREAD
	3S	107	S	X	0800	K	N

PRODUCT BREAKDOWN

PasMac is available in a variety of different configurations to meet your unique needs. In the diagrams below, we illustrate the variable measurements on each PasMac to help identify which product will best fit your needs.

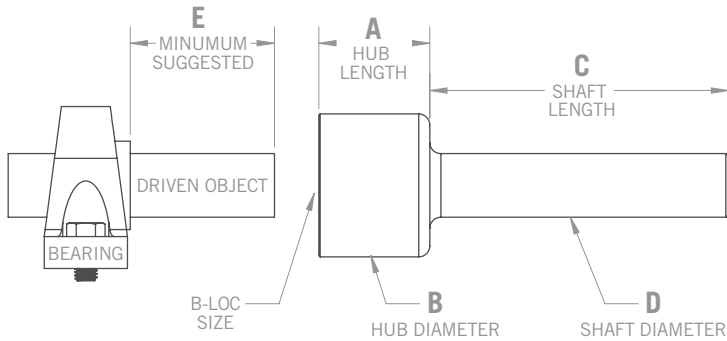
PasMac has the fit for your application.

PasMac SERIES-1



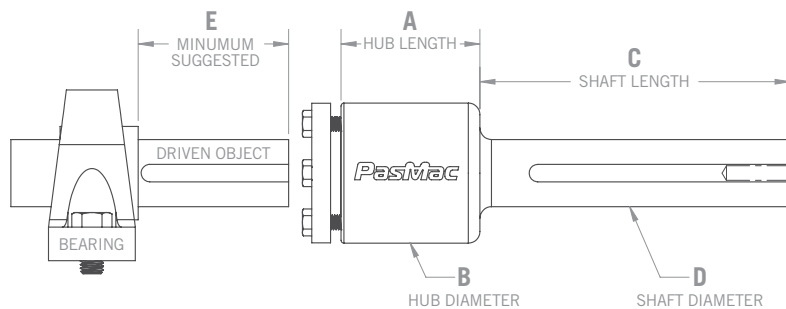
	PM4F	PM6F	PM7F
A¹	1-15/16"	2"	2"
A²	1-7/8"	2"	3-15/16"
B¹	3" ϕ	4-3/8" ϕ	5-1/2" ϕ
B²	4" ϕ	6" ϕ	7-1/2" ϕ
C	8" or 12"	12"	14"
D	1" - 1-3/4"	1-7/16" - 2-1/2"	2-9/16" - 3-5/8"
E	3-1/8"	3-5/8"	5"

PasMac SERIES-2: Keyless



B-LOC GROUP#	A	B	C	D	E	B-LOC GROUP SIZES
05	1.88"	1.48"	8" or 12"	3/4" (15mm)	3"	15mm
06	2.25"	2.19"	8" or 12"	3/4" - 1-1/8" (15mm - 28mm)	3"	3/4", 7/8", 18mm, 19mm, 20mm, 22mm
07	2.25"	2.38"	8" or 12"	3/4" - 1-1/4" (15mm - 32mm)	3"	1", 24mm, 25mm
08	2.25"	2.56"	8" or 12"	1" - 1-7/16" (25mm - 36mm)	3"	1-1/8", 1-3/16", 28mm, 30mm
09	2.25"	2.94"	8" or 12"	1" - 1-5/8" (25mm - 40mm)	3"	1-1/4", 1-3/8", 32mm, 35mm
10	2.25"	3.13"	8" or 12"	1-3/16" - 1-3/4" (30mm - 45mm)	3"	1-7/16", 1-1/2", 38mm, 40mm
11	2.75"	3.75"	8" or 12"	1-3/8" - 2" (35mm - 50mm)	3.5"	1-5/8", 1-11/16", 1-3/4", 42mm, 45mm
12	2.75"	4.00"	8" or 12"	1-5/8" - 2" (40mm - 50mm)	3.5"	1-7/8", 1-15/16", 2", 50mm

PasMac SERIES-2



	3S	4S	5S
A	3"	3-1/2"	5"
B	3" ϕ	4-1/8" ϕ	5-3/8" ϕ
C	8" or 12"	12"	14"
D	1" - 1-3/4"	1-7/8" - 2-1/2"	2-9/16" - 3-5/8"
E	4.38"	5.63"	6.38"

QUESTIONS? NOT SURE WHICH PASMAL IS RIGHT FOR YOU?

Speak with a PasMac professional today. Contact us by calling (844) 727-6221 or email info@pasmacsolution.com. We're here to help!

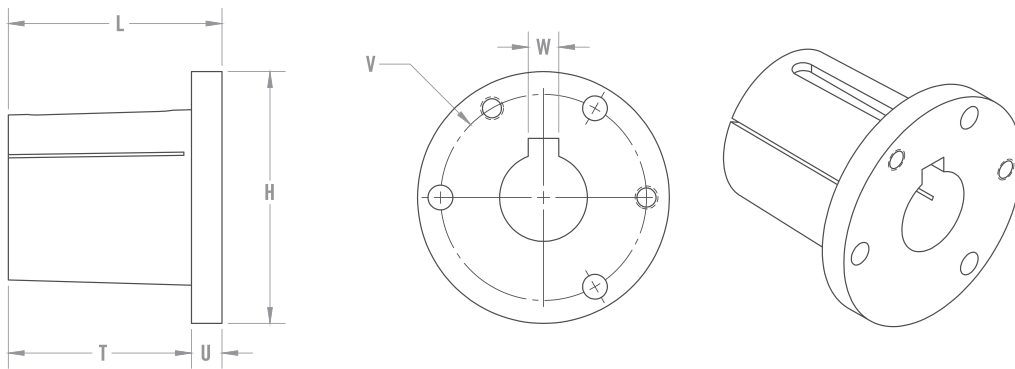


QUALITY PARTS, BUILT TO LAST

Our 3SB, 4SB & 5SB bushings are 100% stainless steel, American made and fit for our line of stainless steel PasMacs. Precision machining, durability and corrosion resistance set them apart from standard cast iron bushings.



PasMac is your answer to trouble-free reducer removal!



	3SB	4SB	5SB
L	2-15/16"	3-1/2"	4-7/8"
U	13/32"	17/32"	5/8"
T	2-17/32"	2-31/32"	4-1/4"
H	3"	4"	5-3/8"
V	2-7/16"	3-3/8"	4-5/8"
W	(varies)	(varies)	(varies)
Bore Range	3/4" - 1-3/4"	1" - 2-1/2"	2-7/16" - 3-5/8"
Cap Screw Size	5/16" x 1"	3/8" x 1-1/4"	3/8" x 1-3/4"

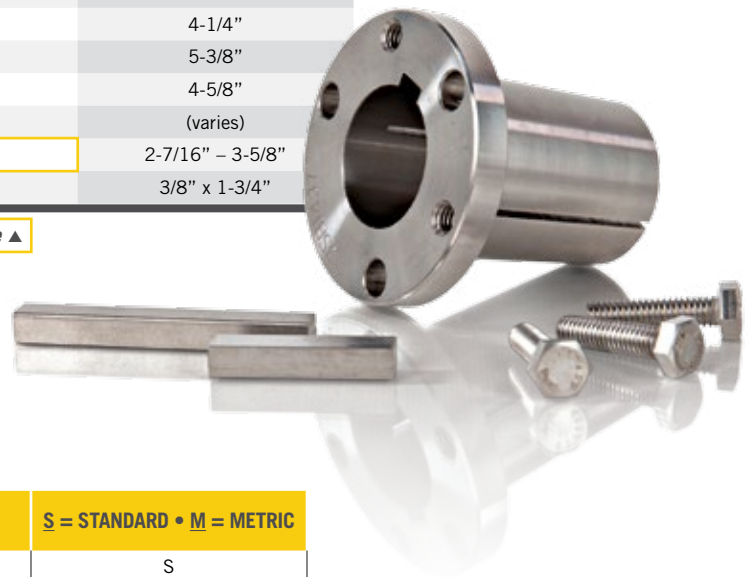
⚡ **READY TO ORDER?**

Call (844) 727-6221 or email info@pasmacsolution.com.

NEED A DIFFERENT SIZE?

Metric sizing also available.

See part number explanation at bottom of page ▲



BUSHINGS | PART NUMBER EXPLANATION

	SIZE	BORE DIAMETER (Ex. 1-15/16")	S = STANDARD • M = METRIC
EXAMPLE	4SB	115	S

Serving the following industries and more...

MANUFACTURING

FOOD

BEVERAGE

MINING

TIMBER

COAL

TECHNOLOGY

PROCESSING

ASSEMBLY

PasMac
REMOVABLE SHAFT SOLUTION

518 W. Columbia Street
Pasco, Washington 99301
1-844-PASMACH1
(1-844-727-6221)
info@pasmacsolutions.com

PASMACHSOLUTIONS.COM